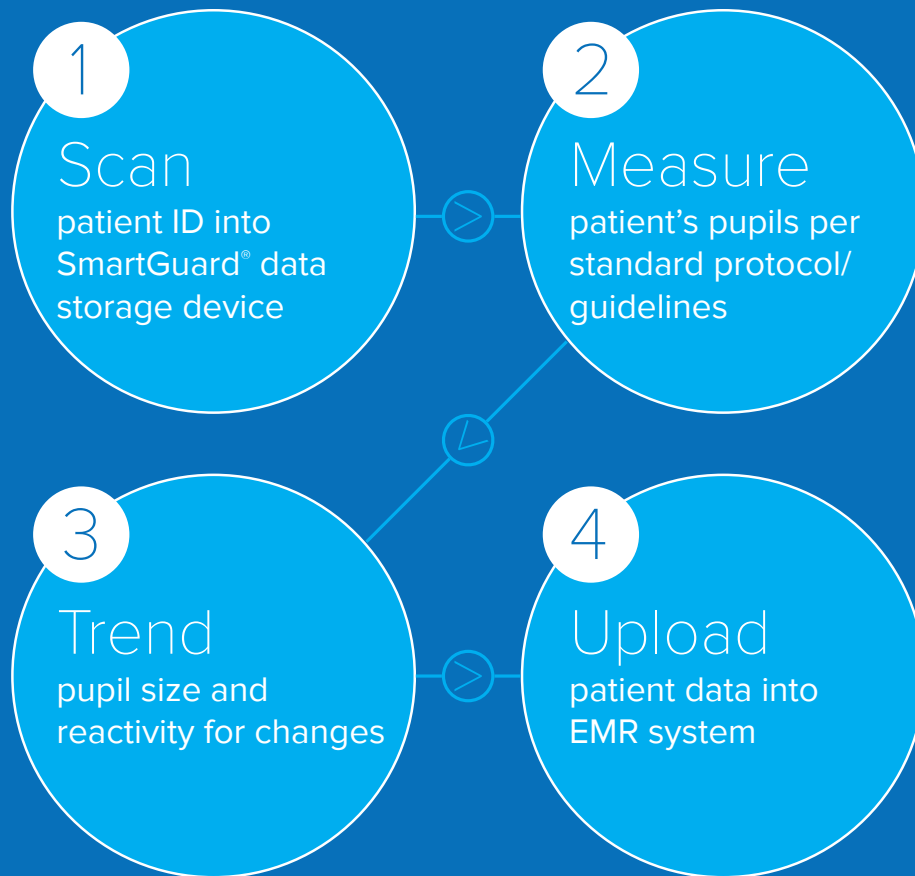


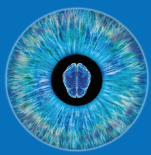
NEUR^{••}PTICS

Introducing the NeurOptics® Smart Approach to Pupillary Evaluation

A completely automated system from patient admission to discharge



An accurate, reliable and objective system that **saves valuable nursing time** and eliminates potential charting errors



NPi[®]-200 Pupillometer System

NPi[®]-200 Pupillometer

- Completely accurate, reliable and objective pupil size and reactivity data independent of examiner
- Pupil reactivity expressed numerically so that now changes in both pupil size and reactivity can be trended over time, just like other vital signs
- Infrared camera, high-precision optics, processor and LED light source
- Bluetooth[®]-enabled, customizable trending screen, EMR-compatible
- Durable, ergonomic design
- Industry-best full two-year replacement warranty



SmartGuard[®]

- Single-patient-use device with smart-card technology
- All patient data stored on SmartGuard memory
- Facilitates patient data upload into EMR system
- Patient data can be disabled in compliance with HIPAA guidelines and facility policies



Barcode Scanner by Socket[®]

- Simple and fast patient ID scans into SmartGuard
- One-time patient ID entry at initial programming of SmartGuard (no need to scan before each pupil measurement)



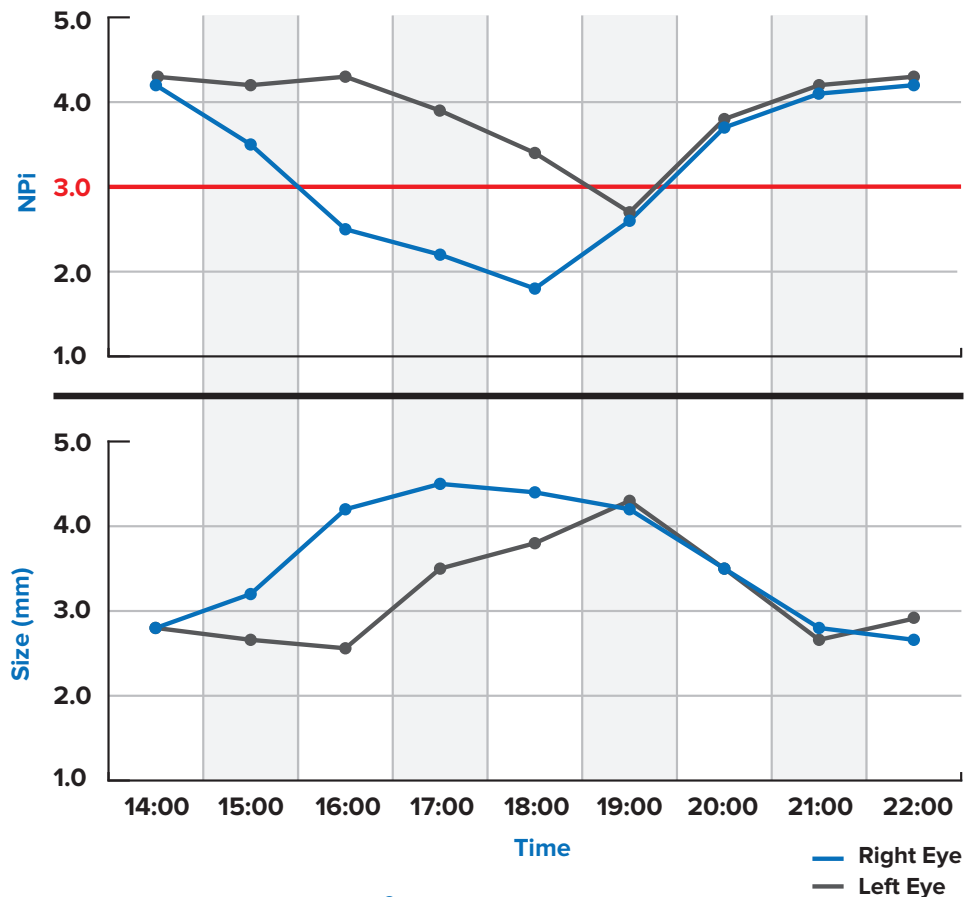
SmartGuard[®] Reader

- Retrieves and automatically uploads patient data from SmartGuard
- Simple USB connection allows Reader to be deployed at any nursing terminal or station

Establish a Baseline and Trend for Changes

- Pupil reactivity expressed numerically
- Now changes in both pupil size and reactivity can be trended over time, like other vital signs
- Along with trending size and NPi®, the NPi®-200 can be customized to trend all parameters of the pupillary light reflex waveform, depending on clinician preference

Pupil Size and Reactivity Variability Over Time



The Neurological Pupil index™ (NPi®) Pupil Reactivity Assessment Scale

Measured Value*	Assessment
3.0 – 4.9	Normal/“Brisk”
< 3.0	Abnormal/“Sluggish”
0	Non-Reactive, Immeasurable, or Atypical Response

**A difference in NPi between right and left pupils of ≥ 0.7 can also be considered an abnormal pupil reading*

**Per the Neurological Pupil index (NPi) algorithm*

© 2021 NeuroOptics, Inc. NeuroOptics, NPi, Neurological Pupil index, SmartGuard, and SmartGuard Reader are all trademarks of NeuroOptics, Inc. Bluetooth is a registered trademark of Bluetooth SIG, Inc., Socket is a registered trademark of Socket Mobile, Inc., and Omnikey is a registered trademark of HID Global Corporation/ASSA ABLOY AB. All rights reserved.

9223 Research Drive
Irvine, CA 92618 | USA
p: 949.250.9792
Toll Free North America: 866.99.PUPIL
info@NeuroOptics.com
[NeuroOptics.com](https://www.NeuroOptics.com)